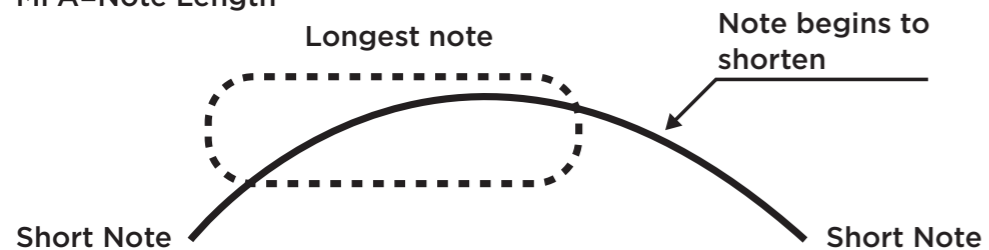


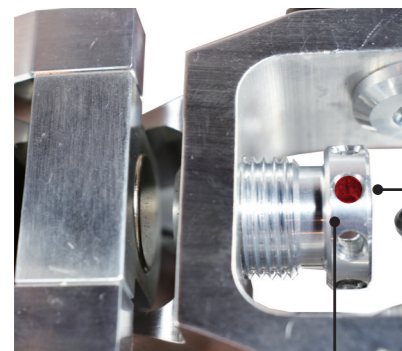
MFA=Note Length



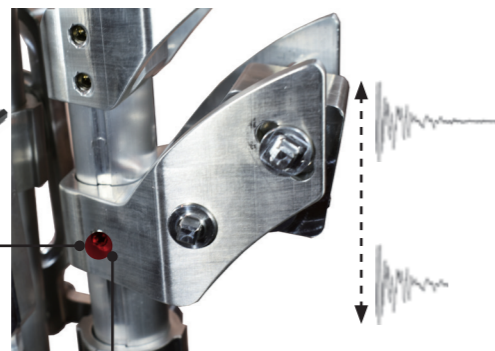
### ADJUSTING THE MFA AND ARG FEATURES

**MFA™**  
(MAGNETIC FORCE ADJUSTMENT)

**ARG™**  
(ACOUSTIC RESONANCE GATE)



Magnetic Force Adjustment Wheel



Acoustic Resonance Gate Adjustment Set Screw

BLACK PANTHER  
designLAB



MAPEXDESIGNLAB.COM

MAATS QUICK START USER GUIDE - © MAPEX DRUMS 2018

BLACK PANTHER  
designLAB

# MAATS™ A

RANDALL MAY INTERNATIONAL MAGNETIC AIR ADJUSTMENT TOM SUSPENSION FOR ACOUSTIC DRUMS  
Multiple US & International Patents Pending

## QUICK START USER GUIDE

MAATS-A WAS DEVELOPED TO ACCENTUATE AND ATTENUATE THE PURITY OF THE INSTRUMENT'S SONIC PROPERTIES. IT ALSO GIVES THE OPPORTUNITY TO PERSONALIZE THE RESPONSE OF THE DRUM TO EACH PLAYER'S PERSONAL PREFERENCE. THE RESULT IS AN UNPRECEDENTED SOUND AND FEEL, GENERATED BY ALLEVIATING VIBRATION TRANSFER LOSS. THE MAATS SYSTEM MITIGATES THE WEIGHT OF THE DRUM INTO A MAGNETIC FIELD, THUS ALLOWING FOR THE MAGNETIC ADJUSTMENT TO CUSTOM DEFINE THE SUSTAIN AND NOTE SIZE INDIVIDUALLY FOR EACH DRUM.



\*\* Although this "Quick Start Guide" is intended to get you playing your new Design Lab kit as quickly as possible, please find full MAATS assembly instruction from [www.MAPEXDesignLab.com](http://www.MAPEXDesignLab.com) at download page

This detailed manual will give you all of the possibilities available to you as a new owner of your Black Panther Design Lab drums, featuring the MAY MAATS-A system.

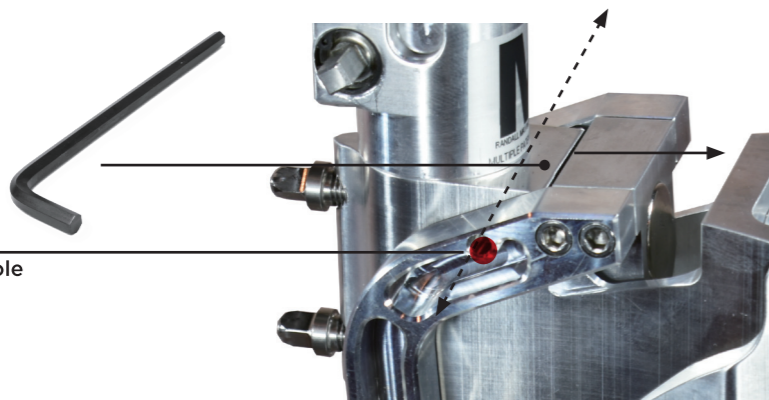
**VERY IMPORTANT:**

*You have to set the leverage position for the correct size and weight drum you are supporting the first time you use the MAATS-A arm.*

**STEP 1:**

Insert hex tool through magnet locking hole, at the top of the leverage arm. You will have to push the leverage arm forward until the locking holes line up.

\*\*You must lock the magnets before you adjust the leverage pins.



Magnet locking hole / insert Hex tool

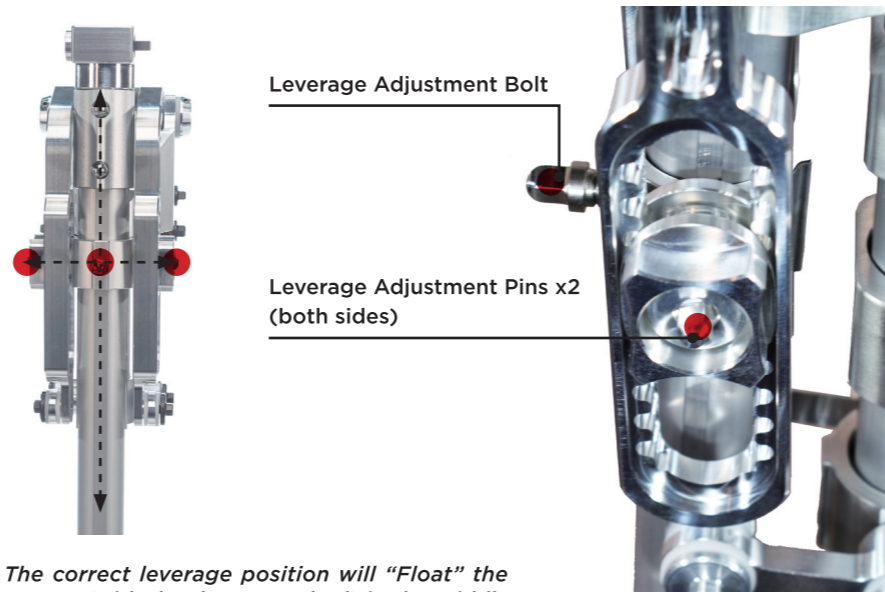
Please view movies demonstrating all features/adjustments at [Randallmay.com](http://Randallmay.com)

**STEP 2:**

Using the drum key, loosen both sides of the leverage adjustment pins. Pull both pins clear of the key slots on both sides of the arm.

**STEP 3:**

Loosen the leverage position bolt. Slide the pins up/down simultaneously to adjust for size/weight. Lower is for heavier, bigger drums, higher is for lighter, smaller drums. After the pin position is adjusted, push the pins back into respective slots. Then, tighten the leverage position bolt. Remove the magnet lock with the hex tool only after tightening these.



Leverage Adjustment Bolt

Leverage Adjustment Pins x2 (both sides)

*Note: The correct leverage position will "Float" the leverage arm (with the drum attached) in the middle of the MFA / Magnet force Area of the arm.*

**MOUNTING THE DRUM:**



Bridge Receptor Block

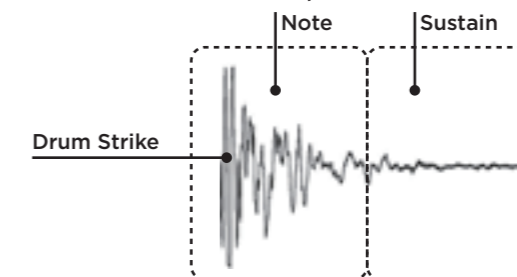
20° up or down

Bridge

**2-Stage Adjustment:**  
1.) Holds bridge receptor and allows 360° spin for tuning.  
2.) Tightening into place

Bridge Receptor Angle Adjustment (x4 both sides)

**The sound of the drum, the main note and the sustain of that note:**



Until MAATS-A, these two parts of the sound were always adjusted at the same time, using a form of external muffling or drum head selection. Now with the MFA and ARG on MAATS-A, you can adjust them separately.

The MFA (Magnetic Force Adjustment) wheel of MAATS-A, affects the main note size. This is adjusted by turning the wheel with the hex tool. Important: there has to be some magnetic force on the drum to relieve the drum's weight. No force, will cause the hardware to take the weight, thus shortening the drum's note. So the longest note is low-mid to mid force.