

Torpedo C.A.B. M User's Manual

Speaker cabinet simulator, stompbox style



The complete electronic version of this manual, as well as the Two notes Audio Engineering software and hardware products, are subject to updates. You can download the most recent versions of the products on the [Two notes Audio Engineering](https://www.two-notes.com/) website.

This manual describes the Torpedo C.A.B. M and provides instructions for its operation. It is highly recommended that you read this document before using the product. The contents of this manual have been thoroughly verified and it is believed, unless stated otherwise, to accurately describe the product at the time of shipment from the factory or download from our website.

Two notes Audio Engineering is a registered trademark of:

OROSYS SAS
76 rue de la Mine
34980 Saint-Gély-du-Fesc
France
Tel: +33 (0)484 250 910
Fax: +33 (0)467 595 703

Contact and support: <http://support.two-notes.com>
Website: <http://www.two-notes.com>

This document is the exclusive property of OROSYS SAS. In the interest of product development, OROSYS SAS reserves the right to change technical specifications, modify and/or cease production without prior notice. OROSYS SAS cannot be held responsible for any damage, accidental or otherwise, that results from an inappropriate use of the Torpedo C.A.B. M Please refer to the safety instructions included in this manual. The reproduction of any part of this document is strictly forbidden without the written authorization of OROSYS SAS.

All product names and trademarks are the property of their respective owners. Product names and trademarks found in this document were used during the development of the Torpedo C.A.B. M product but are in no way associated or affiliated with OROSYS SAS.

1. Foreword

1.1 Safety instructions

Before using the product, it is necessary to carefully read and to bear in mind the following information. **Keep this document in a safe place as it is important for the protection of both user and product.** Should you suspect any malfunction of the device, always seek the assistance of a qualified technician.

1.1.1 Reader warning



The triangle with an exclamation mark highlights important messages concerning the correct use of the device.

1.1.2 Power adapter

Please verify that the voltage required by the mains power adapter matches the voltage in your country. If not or if unsure, do not connect the unit to the wall outlet. This could result in damage to the mains power adapter, the unit and injuries to the user. This product must not be used when there is lightning. In case of severe weather with a risk of lightning, unplug the power adapter to reduce the risk of electric shock and fire.

The mains power adapter provided with the machine complies with the standards of the country where you purchased the product. If replacement is needed, please use a standard compliant mains power adapter.

1.1.3 Safety use conditions

The Torpedo C.A.B. M must never be used near a heat source, near a flame, in the rain, in damp areas, near any kinds of liquids. When transporting the unit, care needs to be taken to avoid any shocks that could cause damage that would require the assistance of a qualified technician.

1.1.4 Cleaning

Always use a dry and soft cloth with no alcohol or solvents for cleaning. Please keep the unit clean and free from dust.

1.1.5 Maintenance

All maintenance operations must be done by service centers approved by OROSYS SAS or by qualified technicians. Never try to repair the unit by yourself.

1.2 Contents of the package

The shipped package contains:

- One Torpedo C.A.B. M unit in a protecting sleeve
- One mains power adapter
- One USB cable
- One 256 Mb memory card
- One quickstart guide

The complete electronic version of this manual, as well as the Torpedo Remote and Torpedo BlendIR softwares are subject to updates. You can download the most recent versions of these products on the [Two notes Audio Engineering](#) website.

1.3 Declaration of conformity

Manufacturer: OROSYS SAS

Category of product: digital audio signal processor

Product: Torpedo C.A.B. M

Test Manager: Guillaume Pille

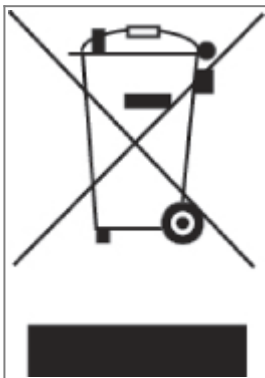
The Two notes Torpedo C.A.B. M is certified to be compliant to the CE and FCC standards:

- EN 55103-1 : 1996 and EN 55103-2 : 1996.
- EN 60065 05/2002 + A1 05/2006.
- EMC directive 89/336/EEC and Low Voltage Directive 73/23/EEC.
- FCC Part 15 : 2008.
- ICES-003 : 2004.
- AS/NZS 3548 class B for Australia and New Zealand.

- IEC : 2008 - CISPR 22 class B.



1.4 Disposal of Waste Equipment by Users in Private Household in the European Union



This symbol on the product or on its packaging indicates that this product must not be disposed of with your other household waste. Instead, it is your responsibility to dispose of your waste equipment by handing it over to a designated collection point for the recycling of waste electrical and electronic equipment. The separate collection and recycling of your waste equipment at the time of disposal will help to conserve natural resources and ensure that it is recycled in a manner that protects human health and the environment. For more information about where you can drop off your waste equipment for recycling, please contact your local city office, your household waste disposal service or the shop where you purchased the product.

1.5 Warranty

OROSYS SAS warrants that this TWO NOTES AUDIO ENGINEERING product shall be free of defects in parts and workmanship when used under normal operating conditions for a period of two (2) years from the date of purchase. This warranty shall apply to the original purchaser when purchased from an Authorized TWO NOTES AUDIO ENGINEERING dealer.

IMPORTANT: PLEASE RETAIN YOUR SALES RECEIPT, AS IT IS YOUR PROOF OF PURCHASE COVERING YOUR LIMITED WARRANTY. THIS LIMITED WARRANTY IS VOID WITHOUT YOUR SALES RECEIPT.

Defective products that qualify for coverage under this warranty will be repaired or replaced, (at OROSYS SAS's sole discretion) with a like or comparable product, without charge. In the case that warranty service is required, Please contact your authorized TWO NOTES AUDIO ENGINEERING dealer in order to obtain an RMA to return the complete product to the Authorized TWO NOTES AUDIO ENGINEERING Service Center closest to you, with proof of purchase, during the applicable warranty period.

Transportation costs to the service center ARE NOT INCLUDED in this limited warranty. OROSYS SAS will cover the cost of standard ground return transportation for repairs performed under this warranty. This limited warranty becomes void if the serial number on the product is defaced or removed, or the product has been damaged by alteration, misuse including connection to faulty or unsuitable ancillary equipment, accident including lightning, water, fire, or neglect; or if repair has been attempted by persons not authorized by OROSYS SAS. Any implied warranties, including without limitation, any implied warranties of merchantability or fitness for any particular purpose, imposed under state or provincial law are limited to the duration of this limited warranty. Some states or provinces do not

allow limitations on how long an implied warranty lasts, so the above limitations may not be applicable.

OROSYS SAS ASSUMES NO LIABILITY FOR PROPERTY DAMAGE RESULTING FROM ANY FAILURE OF THIS PRODUCT NOR ANY LOSS OF INCOME, SATISFACTION, OR DAMAGES ARISING FROM THE LOSS OF USE OF SAME DUE TO DEFECTS OR AVAILABILITY OF SAME DURING SERVICE.

In case you have to send your TWO NOTES AUDIO ENGINEERING product to any other location, it is of vital importance to retain the original packing materials. It is very difficult to avoid damage if shipping the product without these materials. OROSYS SAS is not responsible for damages to the product due to improper packaging and reserves the right to charge a reboxing fee for any unit returned for service without the original packing materials. THE FOREGOING CONSTITUTES THE ONLY WARRANTY MADE BY OROSYS SAS WITH RESPECT TO THE PRODUCTS AND IS MADE EXPRESSLY IN LIEU OF ALL OTHER WARRANTIES EXPRESSED OR IMPLIED

2. About the Torpedo C.A.B. M

2.1 Introducing the Torpedo C.A.B. M

Two notes Audio Engineering is proud to introduce the Torpedo C.A.B. M (Cabinets in A Box), the missing link between the guitarist's rig and the PA or an audio interface. Use the best virtual cabinets available or load your own IR files. This is the pedal version of the critically-acclaimed Torpedo hardware series, optimized for live playing. This product has been developed through years of technical research, with great attention to the needs of guitarists, bassists and sound technicians confronted with the challenges of miking instrument amplifiers, on stage or in the studio. Our goal is to provide ease of use, reliability, versatility and above all, perfect audio quality.

The Torpedo technology was created as an answer to the high pressure musicians have to deal with: lack of time, limited gear availability, loud amplifiers that can't be played at desired volume, as well as bulky and heavy cabinets to carry. In addition, many musicians are more comfortable with their analog amplifier and effect pedals, and don't want to perform using digital modeling systems, which may compromise their playing style and sound.

For these players, the Torpedo C.A.B. M offers a "virtual" alternative to traditional miking, using a technology derived from the convolution reverberation, to achieve a degree of realism never experienced previously with simulators. The Torpedo C.A.B. M is the perfect line output everybody should have at the final stage of their pedalboard or after their amp section to send the sound directly to a PA or a recorder.

The Torpedo C.A.B. M finds its place on your pedalboard, after a preamp, among your usual stompsboxes, or between the amp and the speaker cabinet as an amp DI.

The Torpedo C.A.B. M comes with a large library of 32 cabinets and 8 microphones among the most commonly used models in the world. You can also upgrade and add many other cabinets through the Two notes Store, our online virtual cabinet store. The virtual miking is achieved by choosing one cabinet and two microphones, and fine-tuning the position of each microphone in front of the cabinet.

The Torpedo C.A.B. M allows the user to assume the role of the sound engineer in a professional studio.

The Torpedo Technology: to bring you realism and playing comfort, Two notes has developed a unique technology based on an adaptation of convolution techniques. Starting with the measurement of an actual cabinet + microphone setup, the Torpedo C.A.B. M can accurately reproduce the system as it was measured, as well as the microphone's position in space. In order to take full advantage of these digital algorithms, the highest quality audio design assures a perfect analog-to-digital conversion and a huge dynamic range to retain the ultimate playing experience.

This product has been thoroughly tested in professional studios and stage environments and is the alternative many musicians are looking for, to achieve a professional sound capture of their amplified instruments. The Torpedo C.A.B. M will give you the elusive sound of the greatest recording studios and producers, anytime, anywhere.



Please keep in mind that the Torpedo C.A.B. M is not a loadbox: when connecting the speaker output of your amplifier into the amp input of the Torpedo C.A.B. M, you must always connect a speaker cabinet to the THRU output. The amplifier output impedance must always match the speaker cabinet impedance.

2.2 C.A.B. M overview



- 1- Parameter/Preset Encoder
- 2- Value/Volume Encoder
- 3- OLED display screen
- 4- Amp/Instrument/Line input
- 5- Speaker Output (Warning! When an amp is connected to the AMP input, the related cabinet has to be connected to the Speaker Output of the pedal!)
- 6- Input level selector
- 7- USB for Remote application
- 8- Mains power adapter connector
- 9- Headphones output
- 10- Auxiliary input
- 11- Ground lift switch
- 12- Balanced XLR DI output
- 13- Balanced TRS jack output

2.3 Only A Speaker Simulator?

The Torpedo C.A.B. M is a standalone unit you can bring with you in any situation, whenever sending direct sound to a PA or silent playing is needed.

The role of the Torpedo C.A.B. M is to replace the following elements of the traditional guitar or bass setup:

- the guitar/bass power amplifier
- the speaker cabinet
- the microphone
- the microphone preamplifier

In order to provide a signal that is the closest possible to a traditional guitar/bass miking in a professional studio environment.

The miking is achieved in 3 steps with the Torpedo C.A.B. M:

1. Choose a power amplifier (or switch it off if you are using a full amplifier), a speaker cabinet and up to two microphones (Power Amp, Speaker, and Microphone sections)
2. Position the microphones inside the virtual studio (Miking window and parameters)
3. Shape the signal (EQ and Reverb sections)

At each step, Two notes Audio Engineering implements its know-how to offer the most advanced simulations on the market and ensure absolutely realistic quality both for the musician (in terms of playing sensation) and for the listener (in terms of sound quality). You can load up to 32 Two notes cabinets in the Torpedo C.A.B. M. Download the free Torpedo Remote software (Mac OS X and Windows PC) from the [Two notes Audio Engineering](https://www.two-notes.com/) website, and you will be able to add or remove the stored cabinets. There are currently more than 280 Two notes cabinets available in the Two notes Store that you can try in real time and purchase (requires a working Internet connection).

2.3.1 Tube Stage Output

When using guitar/bass preamplifiers with some other speaker emulators, the musician may feel they miss the power amplifier's contribution to the overall sonic texture. Many musicians get their sound from a particular use of that element and the Torpedo C.A.B. M gives you the possibility to use it too. To that effect, Two notes Audio Engineering has developed an original tube-stage modeling that gives you a choice of 4 different tube models (6L6, EL34, EL84 and KT88) in Push-Pull (PP) in AB class, or Single Ended (SE) in A class configurations. You can push this tube stage like a conventional amplifier and look for that subtle yet particular distortion.

The Torpedo C.A.B. M can be used as a super-DI for keyboards. The tube-amp simulation feature, developed for guitarists and bassists, can also be a very interesting device to warm up the sound of a synthesizer, an organ, or a digital piano.

2.3.2 EQ Section

When recording guitars or basses, it is common to apply a few effects to shape the sound before sending it to a PA or a recorder. In the Torpedo C.A.B. M you will find a simple but efficient EQ filter with three modes, GUITAR, BASS or CUSTOM.

2.3.3 Room reverb

One of the latest additions to our Torpedo firmware is a room reverb. When recording a guitar or a bass, the room sound is really important, especially with distant miking. With the Torpedo C.A.B. M, you get the option to choose how the record room sounds!

2.3.4 The Torpedo technology, convolution and Impulse Responses

The impulse response (IR) of a system describes its behavior under the form of a very detailed filter. The convolution technique uses IRs to simulate the behavior of particular systems, such as reverbs, speakers, EQ

It is the most accurate way to simulate sound signatures that are linear (i.e. without distortion) and timeinvariant (i.e. without modulation, compression, hysteresis). It is particularly well suited for speaker miking simulation.

Two notes has developed a unique technology based on an adaptation of convolution techniques. Starting with a measure of a real cabinet + microphone setup, the Torpedo C.A.B. M can accurately reproduce the system as it was measured, including the microphone's position in space by using IR synthesis.

2.3.5 3rd Party Impulse Responses

The Torpedo C.A.B. M is capable of delivering the best guitar and bass tones by using the Torpedo technology, but you can also embed impulse responses that you have purchased or downloaded for free from 3rd-party developers, in WAV or AIFF formats. You can upload third-party IRs in the Torpedo C.A.B. M using the free Torpedo Remote software.

2.3.6 Create Your Own IR's

Download the free Torpedo BlendIR software from the [Two notes Audio Engineering](https://www.twonotes.com/) website. With this software you will be able to capture your own cabinet + microphone setup and embed its sound signature into the Torpedo C.A.B. M.

3. Connecting the Torpedo C.A.B. M

The Torpedo C.A.B. M finds its place either:

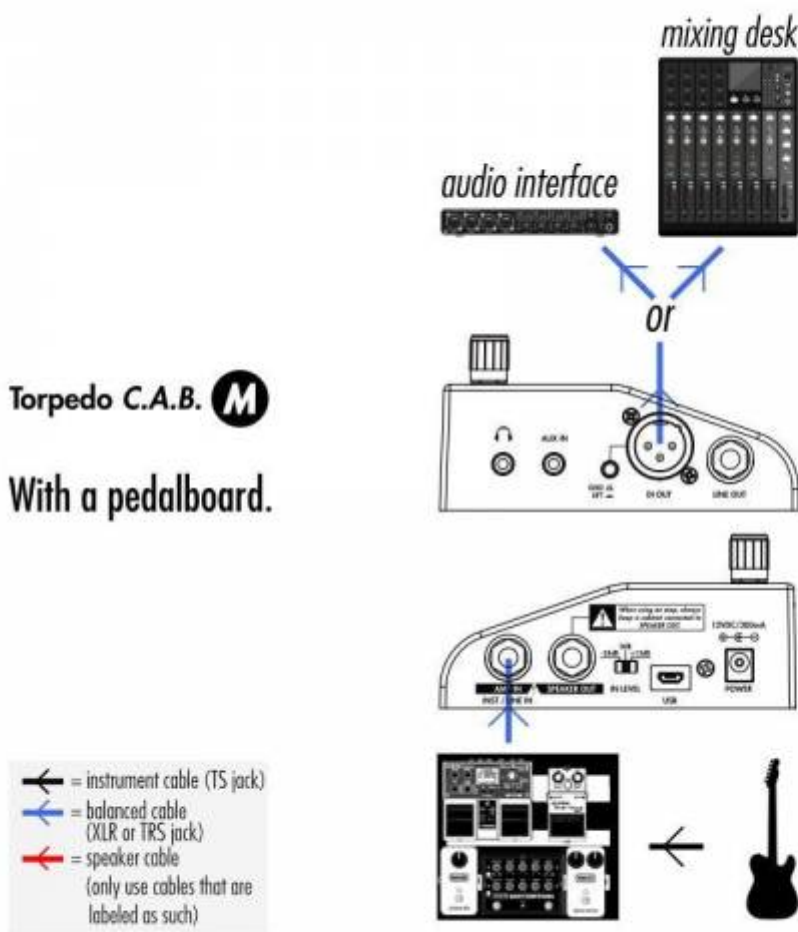
- on your pedalboard, after a preamp, among your usual stompboxes
- or between the amp and the speaker cabinet as an amp DI
- or after a loadbox, for silent playing of your amplifier

To create a lightweight rig with a pedalboard, place the Torpedo C.A.B. M on your pedalboard knowing that the best results are achieved by placing it before the time-based and modulation effects (chorus, delay, reverb), which then become brighter and clearer. This position also allows to take advantage of the possible stereo of these effects. This is similar to the way things are done in the studio, where modulations are often applied to guitar and bass tracks after recording.

To use the Torpedo C.A.B. M as an amp DI, place it after the power amp section of your amp by connecting the speaker output of the your amp to the Amp Input of the C.A.B. M , and connecting your cabinet to the Speaker Output of the pedal. (DISCLAIMER: The Torpedo C.A.B. M is not a loadbox). Using the C.A.B. M this way ensures you to send your exact full guitar tone to the PA or an audio interface to have the same quality studio-grade sound every single time you play.

The Torpedo C.A.B. M can also be used after a loadbox connected to your amplifier in place of the speaker cabinet (such as the [Torpedo Captor](#)). Simply connect the line output of the loadbox to the Line Input of the C.A.B. M. This will provide a silent playing rig, where you can take fully advantage of your amplifier's tone, without having to deal with sound level issues.


3.1 Using the C.A.B. M with pedals, preamplifier



Plug your Torpedo C.A.B. M as the last mono pedal on your pedalboard (for example after your distortion pedal). You connect your pedalboard to the AMP/INST/LINE IN (item N°4 in the [overview diagram](#) above) of the C.A.B. M, and the DI OUT (item N°12) or LINE OUT (item N°13) to a mixing desk or an audio interface. Set the input gain switch IN LEVEL (item N°6) so that the level coming in the pedal is visible on the bargraph of the screen, and not clipping.

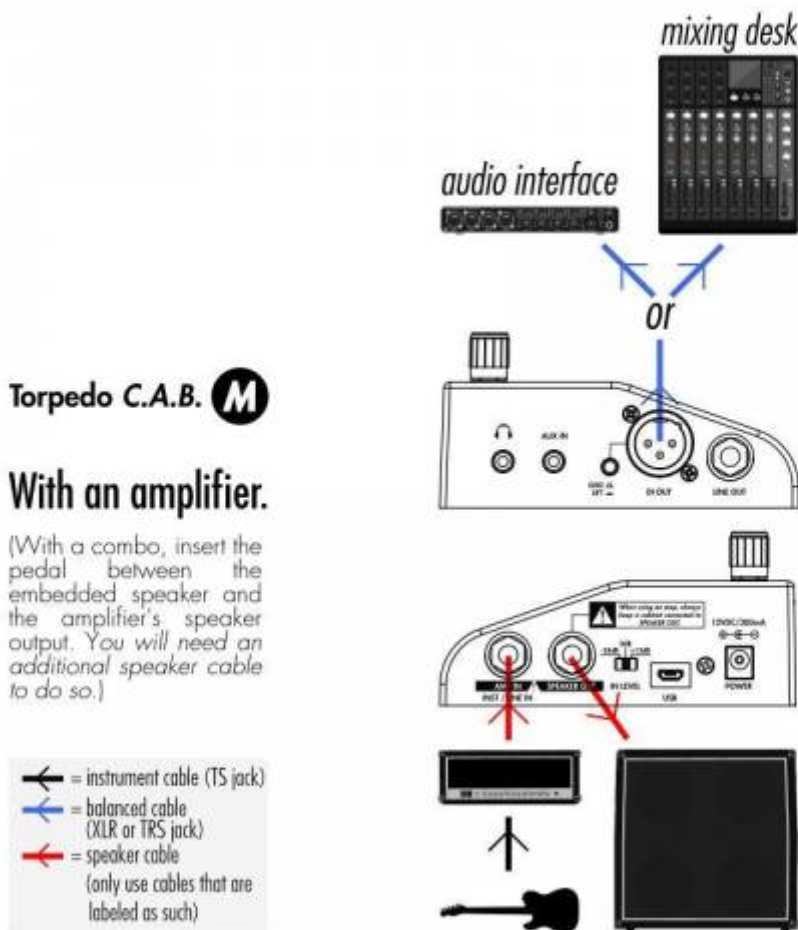
To create a lightweight rig with a pedalboard, place the Torpedo C.A.B. M on your pedalboard knowing that the best results are achieved by placing it before the time-based and modulation effects (chorus, delay, reverb), which then become brighter and clearer. This position also allows to take advantage of the possible stereo of these effects. This is similar to the way things are done in the studio, where modulations are often applied to guitar and bass tracks after recording.

With this amp-less setup, we recommend to turn the Power Amp section (see section 4.3.1 for all the details about the Power Amp section) of the C.A.B. M so that the combination of your pedalboard and the emulated power-amp simulates a complete amp rig.



We recommend putting any modulation, reverb and delay effects AFTER the Torpedo C.A.B. M. This is what is usually done in the studio, especially when using stereo effects. The Torpedo C.A.B. M being MONO, any stereo signal sent to the unit will be converted to MONO. Moreover, if you set up the Power Amp simulation to a high volume, some distortion will appear. It is totally different to send reverb or delay into a distortion stage (like you would do in the effect loop of an amplifier) and to send a distorted sound into a reverb or a delay (like you will do by following this advice). Try both and pick the one that fits you.

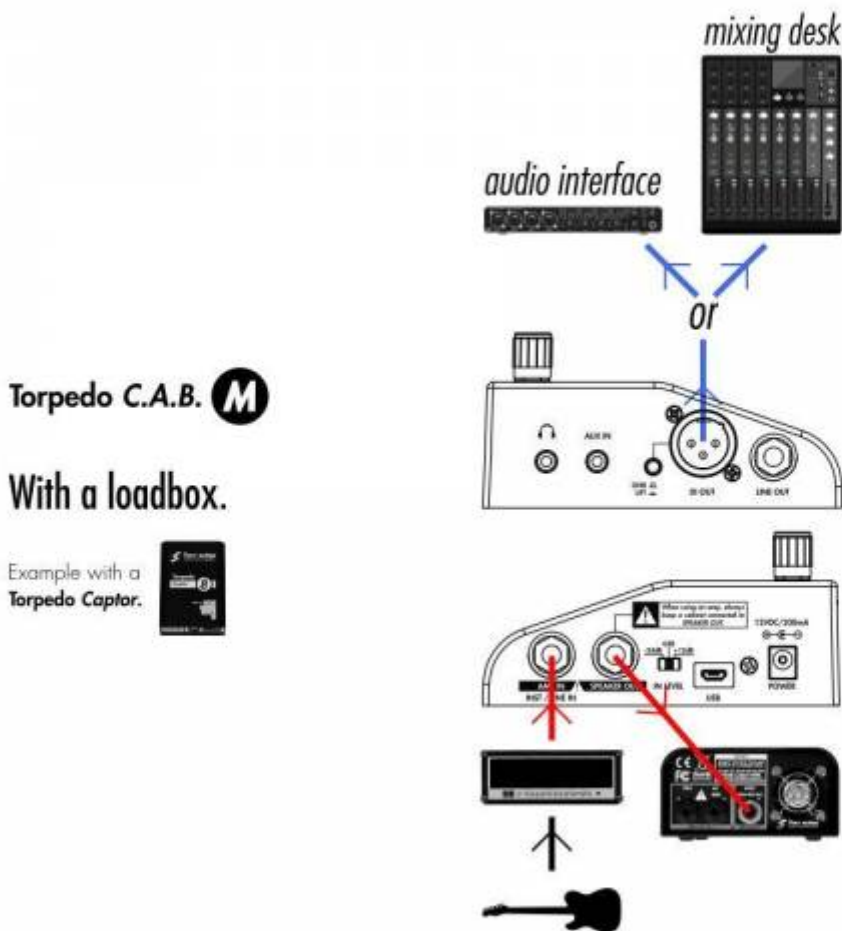
3.2 Using the Torpedo C.A.B. M with an amp



Insert the C.A.B. M between your amp and your cabinet. To do so, connect your amp to the AMP/INST/LINE IN (item N°4 in the [overview diagram](#) above) of the C.A.B. M with a speaker cable and connect the SPEAKER OUT (item N°5) of the C.A.B. M to your cabinet, again with a speaker cable. If you are using a combo, unplug the speaker cable connected to the amp section of the combo, plug this embedded combo speaker in the SPEAKER OUT of the C.A.B. M, and connect the AMP IN of the pedal to the output section of the amp with an additional speaker cable.

	<p>The C.A.B. is NOT a loadbox. Always keep a cabinet connected to the SPEAKER OUT when an amp is connected to the AMP IN of the pedal.</p>
--	--

3.3 Using the Torpedo C.A.B. M with a loadbox



Connect a loadbox (such as the [Torpedo Captor](#)) to the speaker output of your amp, then connect the uncompensated output (meaning without any kind of filter/analog speaker simulation) of the loadbox to the Torpedo C.A.B. M . Depending on the output level of the loadbox, set the input gain selector of the pedal to have the appropriate input level on the screen.

When using the Torpedo C.A.B. M with an amp, we recommend switching OFF the Power Amp simulation section.

3.4 Remote control

1. With a computer

The Torpedo C.A.B. M is a standalone unit, but you can control it from your computer (PC Windows or Mac OSX) with the Torpedo Remote software using a USB connection. Create, save and load presets, load new cabinets or Impulse Response (IR) files. Download the Torpedo Remote for free on the [Two notes Audio Engineering](#) website.

2. With a mobile device

You can also control the Torpedo C.A.B. M from a mobile device (tablet or phone) with Torpedo Wireless Remote. You will have access to all the parameters of the unit. Unlike the Torpedo Remote used with a computer via USB, you will not be able to load new cabinets or IRs in the pedal through your mobile device.

3.5 Stay connected

You may have discovered an idea to use the device in some innovative way. Do not hesitate to come and share your experience on the Two notes Audio Engineering Forum or social networks. Please go to the [Two notes Audio Engineering](#) website and click on the [Community] section.

Two notes is also on the social networks [Facebook](#), [Soundcloud](#) and [Youtube](#) [] so do not wait and come share your creative work!

4. Configuring and using the Torpedo C.A.B. M

4.1 The Torpedo C.A.B. M interface

The Torpedo C.A.B. M is organised around 2 environments : PERFORM and MENU accessible with the 2 encoders on the front panel (which are also push-buttons) as seen in [figure 2.2](#).

When pushing a button or turning an encoder, you will see a parameter moving on the display.

4.2 PERFORM environment


The PERFORM menu is the default menu you will see when first using the Torpedo C.A.B. M. The following information will be displayed on the screen:



1. Preset number
2. Preset name
3. Simulation (S), Arcade (A) or IR Loader (I) mode indicator
4. Bargraphs for input and output levels
5. Output level (from Mute to +12dB)

In this menu you can navigate in the presets and set the output volume of the unit. You will be in this menu when playing without editing or modifying any parameter. This way you can have a fast access to the volume in case you have to quickly lower or increase the volume in any situation.

We recommend first to search for a preset close to the sound you have in mind, then tweak the selected.

	<p>The preset name is limited to 32 letters or numbers. The authorized characters are capital A to Z, 0 to 9 and space.</p>
---	--

4.3 MENU environment

The MENU environment gives you access to the parameters of a preset, allowing you to modify it, or create your own tone from scratch.

To enter the MENU environment from the PERFORM environment, press either the left (MENU) or the right (ENTER) button. This will display the top layer of the MENU environment, which lists various sections you can edit. By entering any section, you'll go down one layer, accessing the parameters of the preset (or device).

In the MENU environment, the encoders have the following behavior:

- turning the left (PARAM) encoder selects the section or parameter you want to edit
- turning the right (VALUE) encoder changes the value of the selected section or parameter
- pressing on the left (MENU) encoder makes you go back one level in the menu until you come back to PERFORM environment

- pressing on the right (ENTER) encoder makes you go into the selected section or toggle the selected parameter

All starts with the first section, which allows you to chose which mode you will be working in : Arcade, Simulation or IR Loader.



To enter any section and edit the related parameters, scroll to the relevant section by turning the PARAM encoder and press ENTER to enter. Some sections can be modified directly without entering it, by turning the VALUE encoder. For most of them, this means turning it ON or OFF (the image will then appear in negative mode).

Depending of the mode, the editable sections change. We will go through the sections for each mode.

4.3.1 Arcade mode

In the simplified interface of the Arcade mode, each parameter actually controls one or several parameters of the device.

The interface of the Arcade mode has 3 specific sections, detailed hereunder.



1. Instrument Type
2. Gear
3. Settings (tone)

4.3.1.1 Instrument



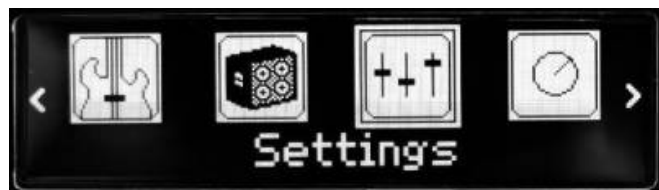
Guitar or Bass, it determines the type of speaker cabinet you can access to and select later, the power amp type and parameters and EQ characteristics of the Contour parameter.

4.3.1.2 Gear

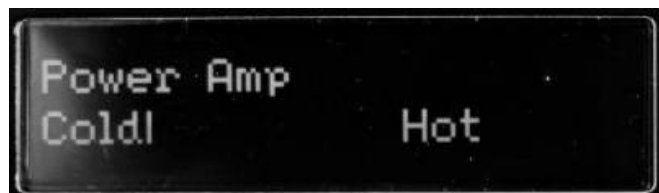


This section lets you choose your virtual cabinet, the microphone and the reverb room where the combination of cabinet and mic is set. Note: in Arcade mode, you can only use one microphone.

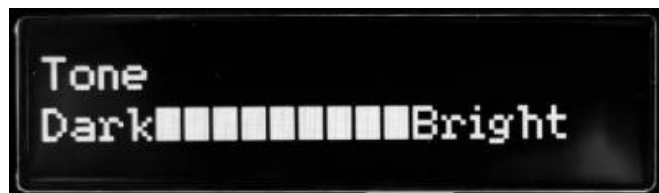
4.3.1.3 Settings



Here you will set the tone of your cabinet and mic combination.



Power amp: In Guitar mode we selected an EL34 Pentode PP power amp and a 6L6 Pentode PP power amp for Bass. Presence and Depth are fixed at 100%. The Power amp parameter determine the amp master volume, from Cold to Hot. it can also be turned OFF.



Tone: Miking tone, from Dark to Bright. Triggers the Center parameter, moving the microphone from the center of the speaker to the side.



Distance: In Arcade mode, Distance triggers both the mic placement algorithm (IR synthesis) and the Dry/Wet of the Reverb. The farther the microphone is from the cabinet, the more you will hear the reverb effect. The microphone is always placed in front of the cabinet.

Contour: EQ settings based on a loudness algorithm. Vintage will cut low and high

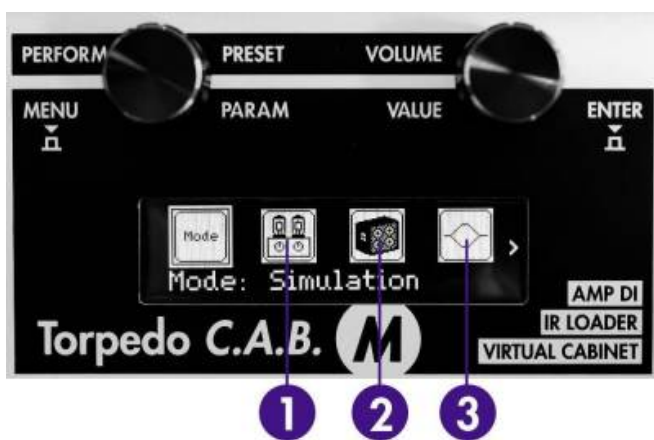


frequencies while Modern will emphasize them. The EQ parameters depends on the Guitar/Bass setting.

4.3.2 Simulation

The Simulation mode gives you access to every parameters available to create a preset.

The interface of the Arcade mode has 4 specific sections, detailed hereunder.



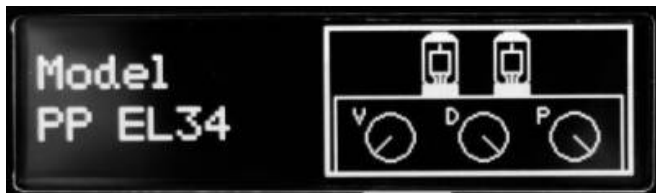
1. Power amp section
2. Miking section
3. EQ section
4. Reverb



4.3.2.1 Power Amp

When using the Torpedo C.A.B. with any kind of guitar/bass preamplifier, or even an electric piano or a synthesizer, you need the color brought by the final stage of a traditional amplifier: the power amplifier. Plug your device to the Torpedo C.A.B. and enjoy the typical sound of the Two notes electrically accurate virtual tube power amplifier.

Model: Choose the amplifier topology (Push Pull (PP) or Single Ended (SE)) and the tubes type (6L6, EL34, EL84 or KT88).



Type: Select how the tube is used, either in triode or in pentode mode. Pentode mode has more headroom and volume than triode.

Volume: Set up the output volume of your virtual power amplifier.

Depth: This setting affects the tube stage frequency (bandwidth).

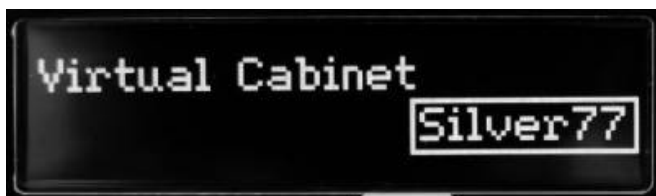
Presence: This setting affects the tube stage frequency (loudness).

4.3.2.2 Miking

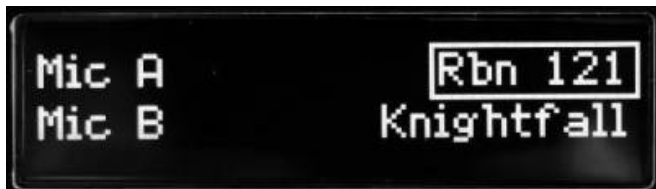
The MIKING section is where you will choose your virtual cabinet and the two microphones to do the miking.

You have access to 32 different cabinets and each cabinet can be miked with 2 of the 8 available microphones for the given cabinet (Mic A and Mic B).

First you choose your cabinet.



Then the 2 microphones you will use.



The next window is where you set levels, mute and phase for each microphone. Note: all the microphone in all the Two notes Virtual Cabinets are already captured in phase with each others, so the Phase parameter is not needed to correct the relative phase of the two microphones. This parameter can rather be used to get a specific out-of-phase effect, or correct the phase between the C.A.B. M microphones and an external signal.



The following window shows you how the mics are placed in regards of the cabinet, and this part will let you do the mic placement for each microphone with the following sequence of parameters.



- **Axis** : You will set the placement of the mic towards the cone of the cabinet's speaker. At 0% the mic is placed at the center of the speaker, at 100% the mic is placed either at the edge of the speaker (when the mic is at the grill cloth), or up to 1 meter (3 feet) away from the center (when the mic is at the furthest distance of the cabinet).
- **Dist** : You will set the distance of the mic towards the cabinet. At 0% the microphone is placed at the grid cloth of the cabinet. At 100% the mic is placed at 3 meters (10 feet) from the cabinet.
- **Side** : You will place the mic at the Front or at the Back of the cabinet.

4.3.2.3 EQ

The EQ section has 3 mode of operations : guitar, bass and custom.



Guitar mode: 120Hz, 360Hz, 800Hz, 2000Hz, 6000Hz (centre frequency of each band from the lower to the highest). You can adjust the gain for each band with a range of -20 dB to +20dB



Bass mode: 50Hz, 120Hz, 360Hz, 800Hz, 4000Hz (centre frequency of each band, from the lowest to the highest). You can adjust the gain for each band with a range of -20 dB to +20dB



Custom Mode : Instead of having fixed frequencies to work with, you have a 5 band semi parametric eq with a low cut filter.

4.3.2.4 Reverb

To enhance you experience with the Torpedo C.A.B. M, especially when playing with headphones, your unit features different reverbs.



Room: The room type determines the type of reverb you will apply to your guitar or bass tone. You have access to 8 different rooms: Studio A & B, Hall A & B, Cathedral, Crypt, Basement and Loft.

Dry/Wet: Determines the amount of reverb to be applied to you tone.

4.3.3 IR loader

This mode is solely dedicated to third party IRs. The Torpedo C.A.B. M allows for the use of IRs which are up to 200 ms long.

The interface of the IR Loader mode is similar to the Simulation mode. It differs only in the Miking section. For a description of the other sections, see the Simulation mod description above.

4.3.3.1 Miking

The MIKING menu is where you will choose the IRs you want to use. Just like in simulation mode where you can dual mike a cabinet, you will be able to select 2 IRs to be used at the same time.



You have access to the Folder where you will then select an IR. First you choose your folder where you will be browsing the IRs you need. Then the IR file you will use.



The next window will let you set levels, mute and phase for each IR.

Now that we have covered the 3 different modes of the C.A.B. M in the MENU environment, we will look at the sections which are common to all 3 modes.

4.3.4 Level



This parameter lets you set the level of the preset. It is independent of the output level (set in the PERFORM environment), which is the same for all presets and acts as a general, master level.

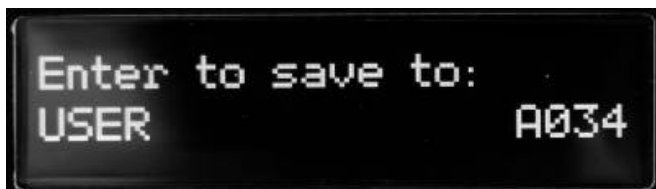
4.3.5 Save



This section allows you to save a preset.



First you rename the preset by scrolling the characters.



When the name is done, press Enter (the right encoder knob) to select the memory slot where you will save the preset. Once you have chosen the slot, press enter. The unit will display « Saving, please wait... » and when saved, you will be at the memory location you saved for this preset.

4.3.6 Global



Here you will have access to parameters that concerns the aux input, the display, the memory, etc.

4.3.6.1 Aux Level



You set the level of the AUX input located on the left side of the pedal. You can mute the signal by pressing ENTER.

The signal coming from the AUX input does not go through the C.A.B. M processing (Power Amp, Miking...). Only its level is adjusted before mixing it at the output of the unit.

Keep in mind that the AUX input is downmixed from stereo to mono.

4.3.6.2 Audio performance

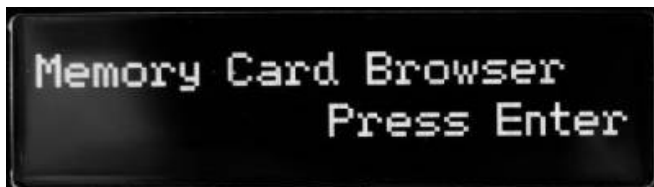


This setting combines the resolution of the third party IRs you are using and the latency it generates. If you choose a low latency setting, your IRs will be truncated at 40ms. Selecting a higher resolution for the IRs (up to 200 ms) will result in more latency.

The indicated latency is the actual latency of the whole device, measured from the input to the output. Even at the highest setting, the latency is low enough not to be noticed when playing.

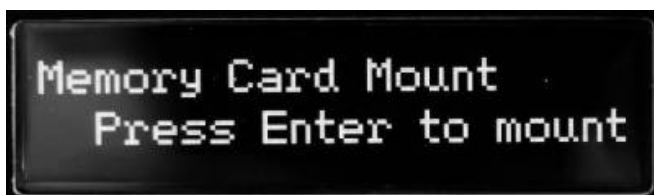
However, latencies add up when using several digital products, which can lead to a point where it becomes noticeable. In that case, lowering this setting can prove useful.

4.3.6.3 Memory card browser



The Torpedo C.A.B. M comes with a memory card of 256 MB to have access to more third party IRs in the IR loader mode. Here you can browse the IRs you have loaded on the memory card (only 48KHz .wav files are displayed). If you need to load other formats of IR files, please read below on how to do so using Torpedo Remote.

4.3.6.4 Memory card mount



When your Torpedo C.A.B M is connected to a computer, you can view the content of the memory card by pressing Enter (the right encoder knob) to mount the memory card. Your pedal will then show up as a storage unit in your computer.

When the memory card is mounted, the interface of the C.A.B. M is locked, in order not to interfere with the computer. Press ENTER once you finished editing, copying, moving or erasing files to unlock the C.A.B M.

4.3.6.5 BLE Pin code



When you activate the Bluetooth control from your mobile device, to sync with the C.A.B. M you will need to input the pin given here. If you want to reset the pin, you press Enter to renew the pin, and you have to power the unit off (unplug the power adaptor) then on (plug the power adaptor back in) to reboot the unit so that the new pin is taken into account.

4.3.6.6 Brightness

This setting determines the brightness level of the display screen.



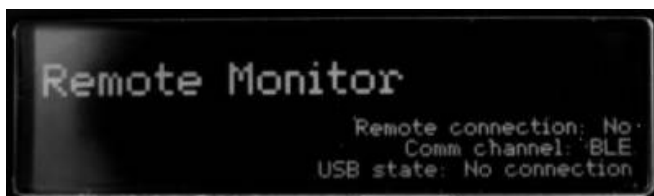
4.3.6.7 Screensaver



The OLED technology used in the screen of the Torpedo C.A.B. M allows for better display with higher resolution graphics. This technology is however known to be sensitive to a burn-in phenomenon, when continuously displaying the same graphics. To avoid this issue, we implemented a set of screensaver options. We recommend you use them to increase the lifespan of the display screen.

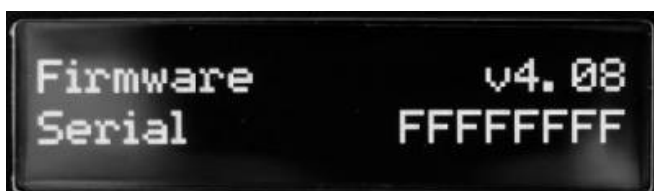
You can choose between an animation, a dim of the display, or the screen going into sleep mode (turns off) after a delay period you set from 1 to 60 seconds.

4.3.6.8 Remote monitor



This menu indicates whether you are connected to the Remote or not, and if you are connected to the C.A.B. M by USB or by Bluetooth (BLE). This can be used to troubleshoot communication issues with the Remote and Wireless Remote softwares.

4.3.6.9 Firmware/Serial



Here you can see which firmware is installed in the Torpedo C.A.B. M. You also have access to the serial number of the machine (which is also available on a sticker under the unit). This serial number is used to register the unit, as well as differentiate between several units in the Remote and Wireless Remote softwares.

4.3.7 Which cabinet is the right one for me?

The Torpedo C.A.B. M comes with 32 cabinets, for bass and guitar. Among these cabinets you will find some that you know, others that you should know, and maybe the hidden gem that will work for you

and you had no idea. To work faster, you should make sure the EQ, reverb and anything apart the cabinet and microphones are turned off so you can concentrate on that part of the process.

Please try the cabinets without too much preconceived idea about what you think you need. Often, the solution comes from a cabinet you wouldn't think of. As a general guide, we recommend using small sized cabinets for more mids and high frequency, they are good for solos and clean tones. Use the big boys on distorted and/or or rhythm guitars.

4.3.8 Which microphone is the right one for that cabinet?

You will find a selection of 3 types of microphones with each Two notes cabinet: condenser, ribbon and dynamic. The microphone technology gives an idea on how it will sound, even if, with each technology, you could find microphones that are not sounding as you might expect.

- With the Torpedo C.A.B. M, you will choose a ribbon microphone if you need a smooth, creamy tone. They are perfect when the guitar or the bass is in a light mix (meaning without tons of other instruments or distortion). We always recommend that type of microphone for the guitarist or bassist who is approaching miking techniques for the first time, they will sound very close to what you hear on your traditional guitar or bass cabinet.
- Condenser microphone usually give wide bandwidth and great details in the upper frequency. Very good on bright clean tones, they also excel at helping fit a distorted guitar in a mix.
- Dynamic microphones are what you usually find on stage because they are sturdy and reliable. They usually give good detail in the mids, but they are not as subtle as ribbon or condenser microphones.

Take the time to try them, and learn more about the different types of microphones to anticipate what you need, depending on your amp and cabinet tone, and of course the type of tone you aim at having on stage or in the studio.

4.4 Torpedo Remote

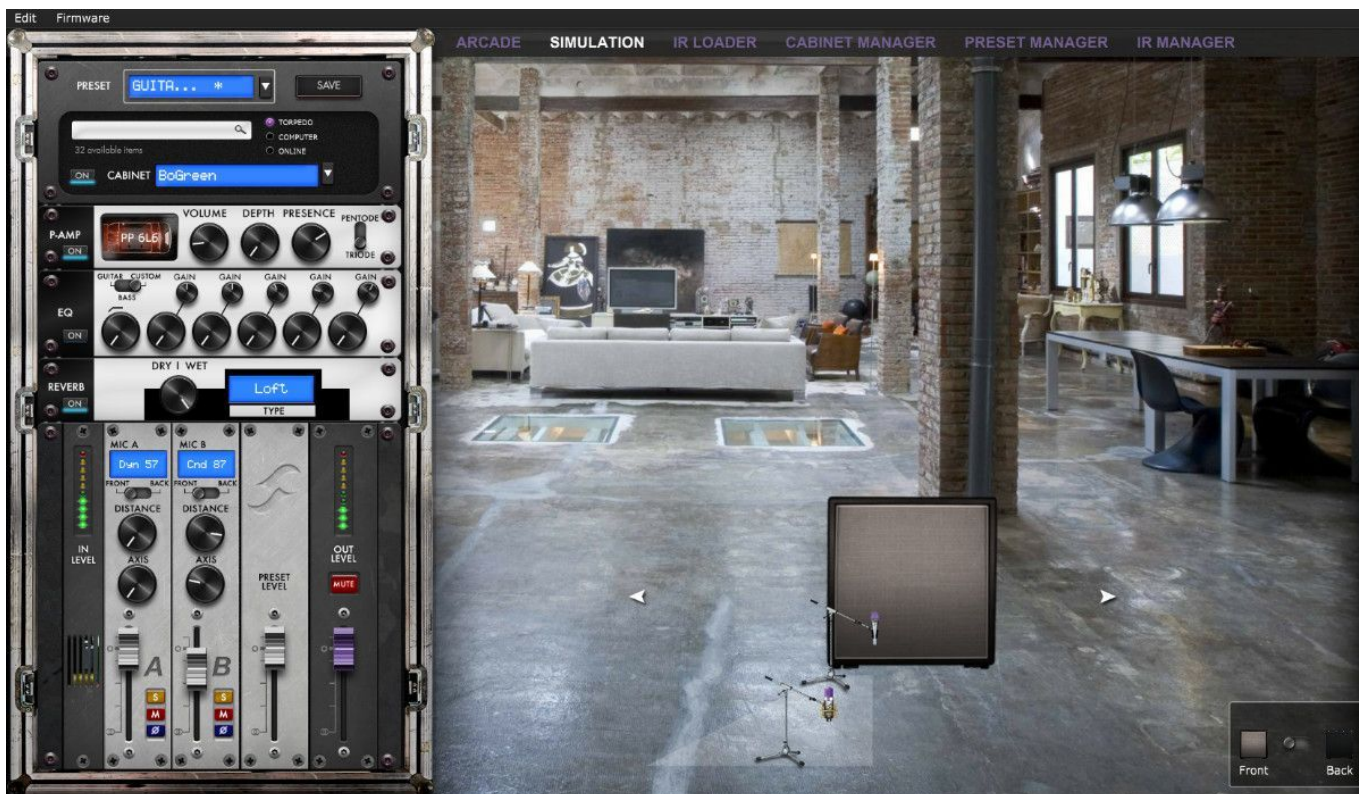
With the standalone software Torpedo Remote, take control of the unit via USB, change the parameters, arrange or add/delete cabinets and IR files, and apply updates. Torpedo Remote will detect any new update or new Two notes cabinets (it requires a working Internet connection).

You can download Torpedo Remote for Windows[®] and MAC OSX[®] from the [Two notes Audio Engineering](https://www.two-notes.com/) website.

Like the pedal, the Remote is arranged around the 3 modes : Arcade, Simulation and IR Loader. Here are the different layouts.



Arcade mode with the simplified rack and one microphone to move around the cabinet.

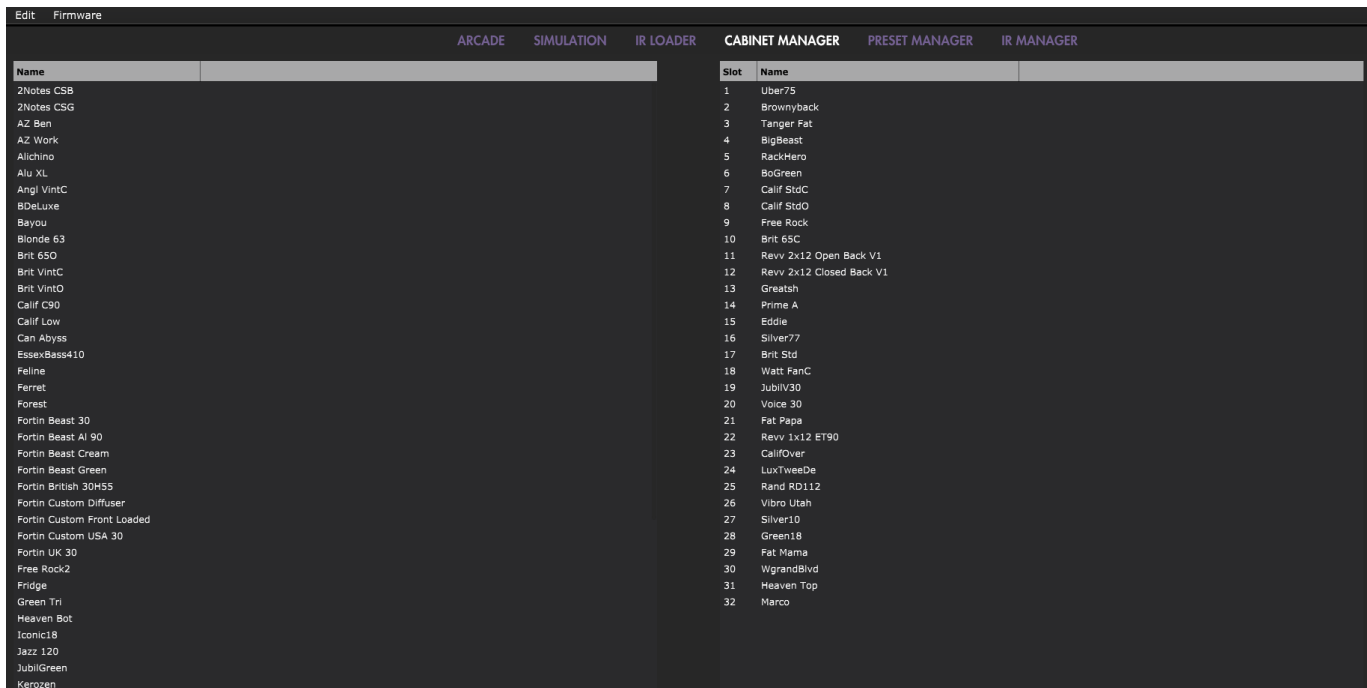


The Simulation mode gives you access to all parameters and the two microphones, which can be placed at the front or the back of the cabinet.

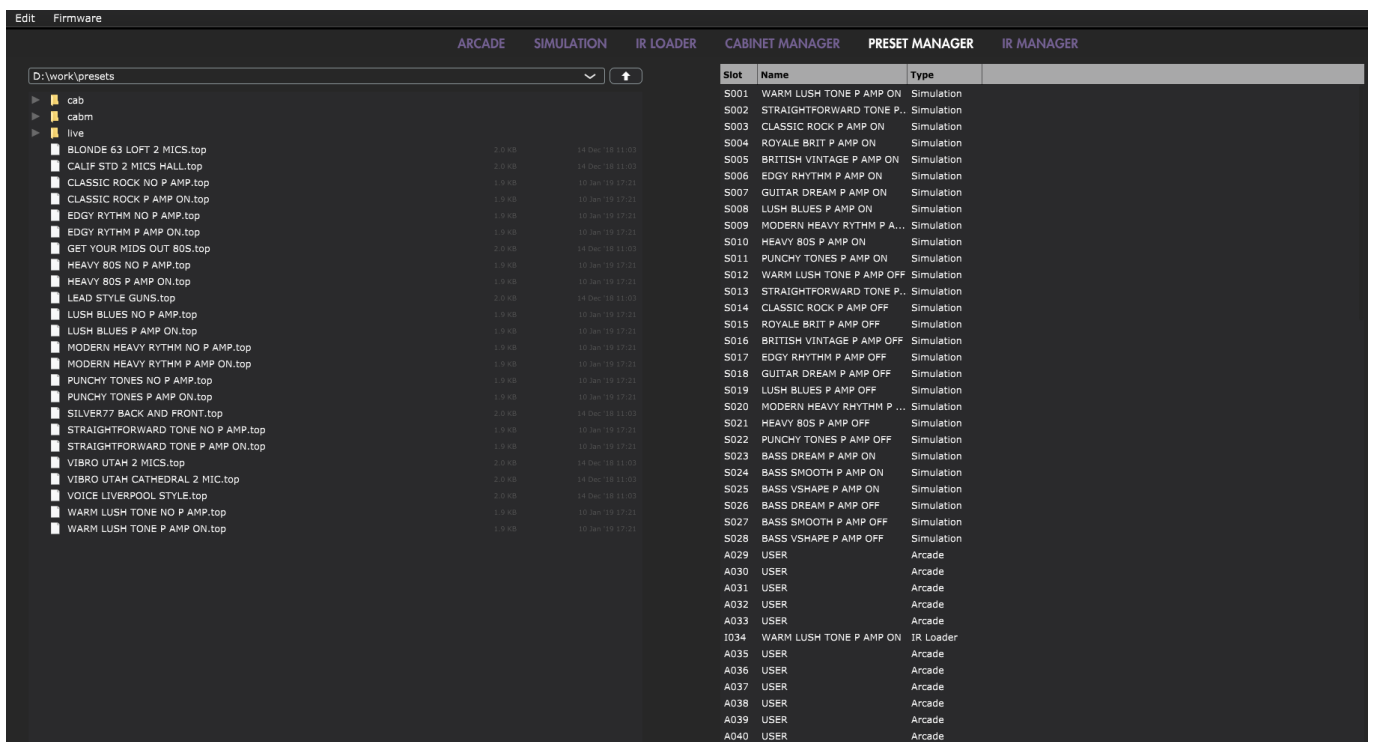


The IR Loader mode gives you quick access to the 2 IRs you can use simultaneously, with a bigger display to visualize the complete name of the files.

The Remote allows you to easily organize your Two notes virtual cabinets, your presets and your third party IRs.



In the Cabinet Manager window, you can visualize on the left side the cabinets that are available in your license and on the right side what cabinets are loaded in the pedal. you can drag and drop your cabinets from the left side panel (the computer side) to your Torpedo C.A.B. M. (the right side panel). If ever the 32 memory slots are full in the Torpedo C.A.B. M, you need to free space by dragging and dropping any cabinets to the bin.



The installation process of the Torpedo Remote software creates a folder where the Two notes virtual cabinets are stored :

- [Program Files\Two Notes Audio Engineering\Cabinets] on Windows (32bits)
- [Program Files (x86)\Two Notes Audio Engineering\Cabinets] on Windows (64bits)
- [Library/Application Support/Two Notes Audio Engineering/Cabinets] on MAC OSX

Torpedo Remote automatically downloads and saves the Two notes virtual cabinets in this folder.

A second folder is created, where the 3rd party Impulse Responses are stored by default:

- [Program Files\Two Notes Audio Engineering\Impulses] sur Windows (32bits).
- [Program Files (x86)\Two Notes Audio Engineering\Impulses] sur Windows (64bits).
- [Library/Application Support/Two Notes Audio Engineering/Impulses] sur MAC OSX.

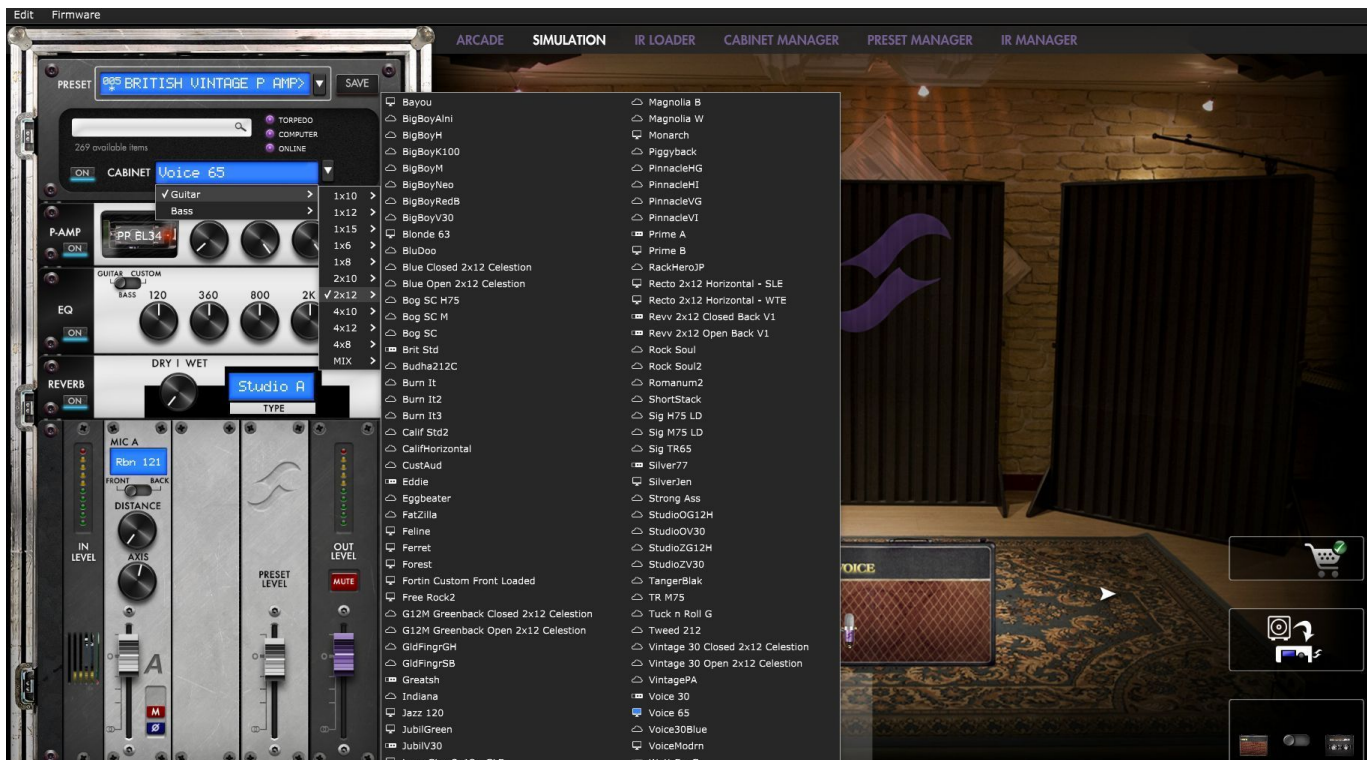
You can store your IR files in this folder, or change the path of the folder in the interface of Torpedo Remote.

To load a Two notes virtual cabinet, a .tur file or a 3rd party IR in the Torpedo, use the Memory Manager of Torpedo Remote.




4.5 Want more cabs?

4.5.1 Two notes cabinets

You can preview any cabinets that are not in your licence when using the Remote. This is why when you browse the cabinets in the Remote the list is way bigger than what you have in your licence or in your Torpedo C.A.B. M.

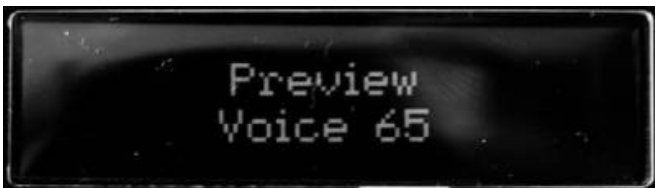


You will see 3 types of icons in front of the names of the cabinets :

-  Cabinets which are on your Torpedo unit.
-  Cabinets which are on your licence loaded in your computer
-  Cabinets which you do not own but can preview before buying them on the Two notes Store.

When you are previewing a cabinet that is on your computer (which means that you own it and it is in your license stored in your computer), the Remote needs to load the cabinet first so you can edit all the parameters. As you are previewing, you will only have access to one microphone for the cabinet. Audio is still going through normally through the pedal, so you can use the C.A.B. M like you would normally.

The pedal will show « Preview » on the screen :

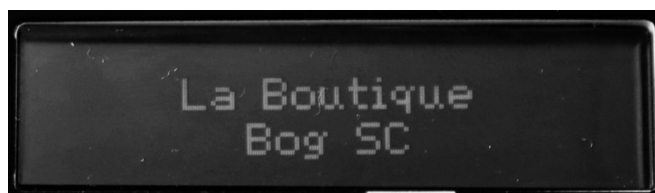




This box allows you to transfer the cabinet you are previewing from your computer to your C.A.B. M (as long as you have memory slots available in your unit).

When you are previewing a cabinet that you do not own, random silences are inserted and you have access only to one mic to preview the cabinets.

The pedal will show « La Boutique » on the screen :





You can add the previewed cabinet in the Store Cart by clicking on the trolley with the plus sign :



This operation can be repeated for any cabinets, and when you want to finalise the cart and buy the cabinets you want, you click on the trolley with the green tick and you will be taken to the online Two notes Store. The trolley with the minus sign allows you to remove the current cabinet from the cart :



No billing or information on the payment method is stored on the Remote, so as to ensure maximum security.

4.5.2 .tur files

.tur are proprietary files created with the Two notes Audio Engineering Torpedo BlendIR software. The software is available for download from the [Two notes Audio Engineering](https://www.two-notes.com/) website. With Torpedo BlendIR you are able to use the Torpedo technology to capture the sound signature of your own cabinet and microphone in the deepest details.

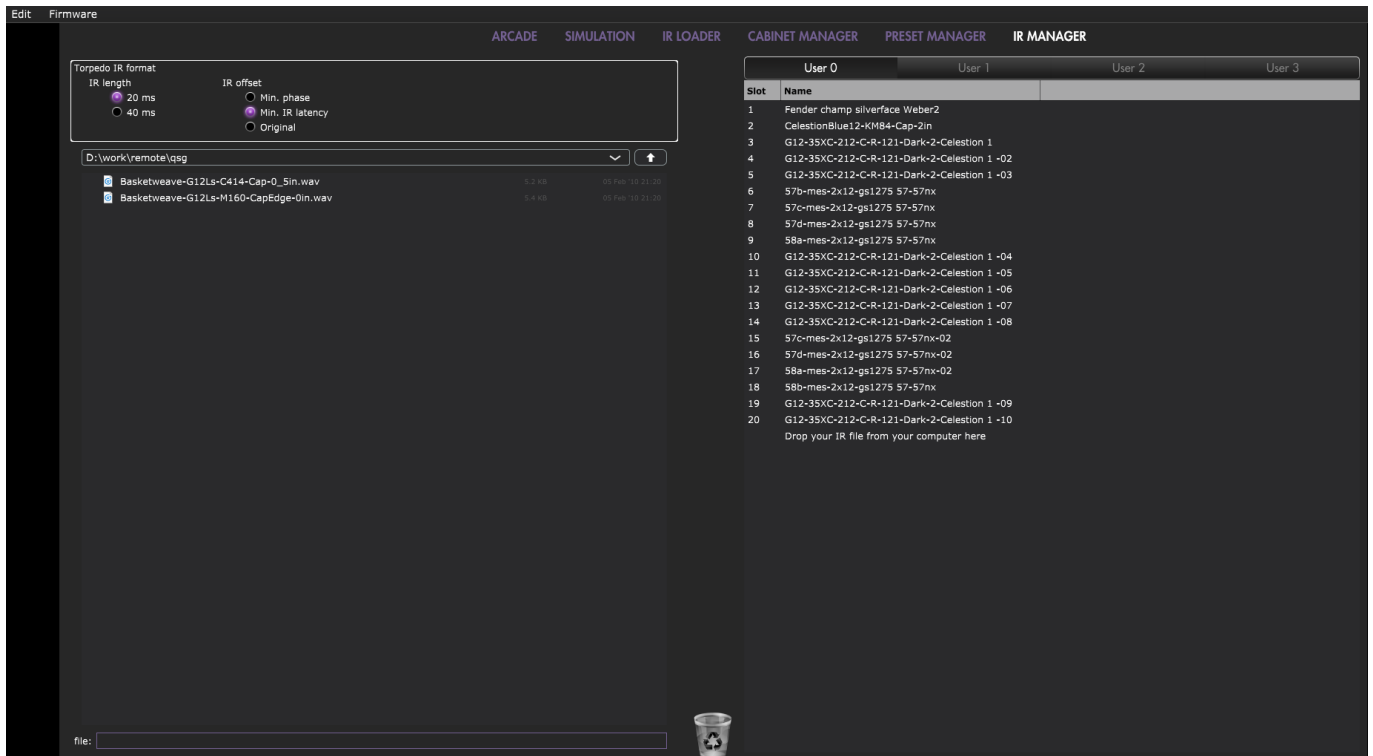
To load a file into the Torpedo, place it in the default Impulse directory, or select the directory containing the files through Torpedo Remote (this can be done in the menu). You can then load the files into the Torpedo through the Memory Manager or directly listen to them through the main Remote window.

Please note that with .tur files you do not have access to the microphone positioning parameter.

4.5.3 3rd-party IR files (in .wav or .aiff format)

Torpedo C.A.B. M complies with third-party Impulse Responses (IRs) in .wav or .aiff format, 16 or 24bits, 44.1Khz to 96Khz.

To load a file into the Torpedo C.A.B. M internal memory, use the IR Manager window.



The left panel is the files on your computer. You can browse the folders where you have stored your IRs. The right side represents the IR files that are loaded in the Torpedo C.A.B. M. You can drag and drop the IRs from the computer (left) to the Torpedo (right). If you wish to free memory slots in the pedal, you can drag and drop the IRs to the bin at the bottom.

You have access to some options to modify the IR file for the transfer:

1. **IR length:** increasing the IR length will improve the resolution of the Torpedo processing (more precision will lead to better accuracy in the low end). Please note that a 40ms IR will take 2 slots in your Torpedo C.A.B. M's internal memory.
2. **IR offset:** you have access to 3 options that will change the way the IR file will be processed:

* **Min Phase:** an algorithm will move the samples in the file so it will sound in phase with any other IR file (provided you use that function to transfer the other files as well).

* **Min. IR Latency:** the file is cut so there is no silence before the first sample, this can lead to a change in the sound but your latency will be minimal.

* **Original:** the samples in the file remain untouched. You may experience phase cancellation issues with mixing it with other IR files.

Note: with 3rd-party files you do not have access to microphone positioning parameters.

5. Specifications

5.1 List Of Power Amplifiers

Designation	Characteristics
SE 6L6	Configuration Single Ended - Class A with 6L6
SE EL34	Configuration Single Ended - Class A with EL34
SE EL84	Configuration Single Ended - Class A with EL84
SE KT88	Configuration Single Ended - Class A with KT88
PP 6L6	Configuration Push-Pull - Class AB with 6L6
PP EL34	Configuration Push-Pull - Class AB with EL34
PP EL84	Configuration Push-Pull - Class AB with EL84
PP KT88	Configuration Push-Pull - Class AB with KT88

5.2 List of cabinets

Designation	Inspired by
GUITAR cabinets	
Uber75	4×12 cabinet with Celestion® G12T-75 and V30.
Brownback	4×12 cabinet Peavey 5150® with Celestion® speakers
Tanger Fat	PPC412HP© 4×12 Orange® with Celestion® Heritage G12H (55Hz) and Celestion© G12M Heritage Greenback
BigBeast	Zilla® 4×12 Closed Back, 16 Ohms. Equipped with a Celestion® Vintage 30
RackHero	Suhr® CAA 4×12 CB Alien Transformer® 20W Greenback clones
BoGreen	Bogner® 4×12 Greenbacks G12M25 Reissue in 16ohms
Calif StdC	Mesa/Boogie® Rectifier® Standard 4×12 Celestion® V30 closed back
Calif StdO	Mesa/Boogie® Rectifier® Standard 4×12 Celestion® V30 open back
Free Rock	VHT® Deliverance 4×12 Eminence® P50E
Brit VintC	Marshall® 1965A 4×10 Celestion® G10L-35 closed back
Revv 2×12 Open Back V1	Revv 2×12 open back with Warehouse Guitar Speakers Vet 30 and ET 90 drivers
Revv 2×12 Closed Back V1	Revv 2×12 closed back with Warehouse Guitar Speakers Vet 30 and ET 90 drivers
Greatsh	Gretsch® 6159 amp cabinet with two Jensen® C12-PS
Prime A	Divided by Thirteen® FTR37 2×12 OB Celestion® Blue & G12H30 70th Anniversary
Silver77	Fender® Twin Reverb® 2×12 with orange JBL®
Vibro Utah	Vintage 1961 Fender® Vibrolux® 1×12 original Utah speaker
Vibro V30	Vintage 1961 Fender® Vibrolux® 1×12 Celestion® V30
Voice 30	Original Vox® AC30 JMI 2×12 Celestion® "Silver Bell"
Eddie	Peavey® 5150 2×12 Sheffield 1200
Brit Std	Marshall® JCM900 2×12 Celestion® G12T

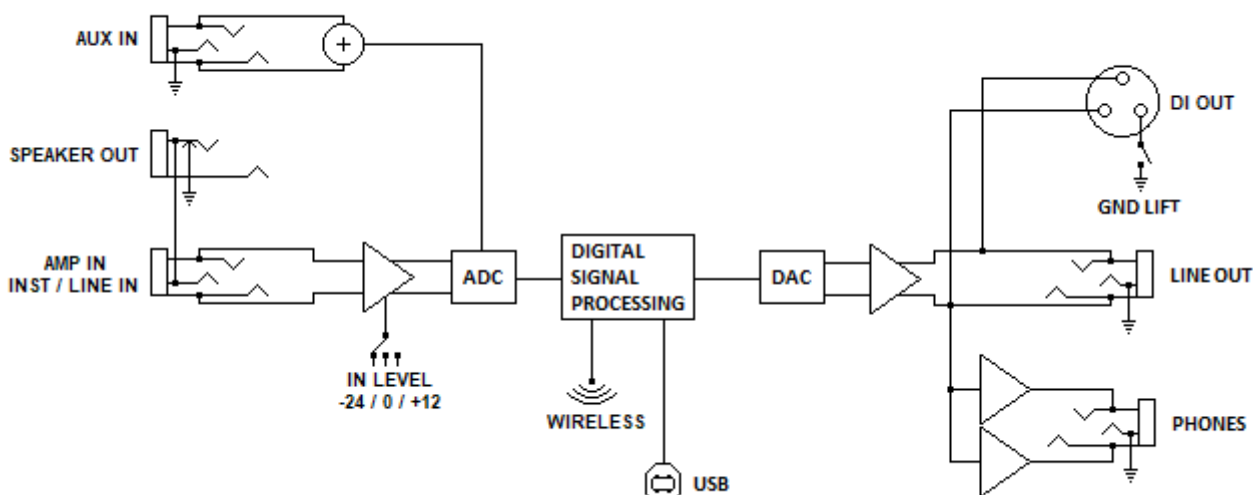
Designation	Inspired by
Watt FanC	Hiwatt® 2×12 Fane closed back
Revv 1×12 ET90	Revv 1×12 with Warehouse Guitar Speakers ET90 driver
CalifOver	Mesa/Boogie® 1×12 with Blackshadow® C90 speaker.
LuxTweeDe	Fender® Blues Deluxe Reissue with a custom Eminence® speaker
Rand RD112	Randall® RD112 1×12 angled with Celestion® Vintage 30
Silver10	Fender® Princeton Reverb® with Jensen® P10Q
JubilV30	Marshall® 2556AV 2×12 Celestion® Vintage 30
BASS cabinets	
Green18	Trace Elliot© 1818T
Fat Mama	Ampeg© SVT-410HE 4×10
WGrandBlvd	Ampeg® B15N 1×15 CB Jensen® C15N
Heaven Top	David Eden® 4×10 Markbass® 2×10
Marco	Markbass® 2×10

5.3 List of Microphones

Each cabinet in the Two notes library comes with a choice of 8 microphones. The selection of microphones depends on the type and model of cabinet. In other words, some microphones in the following list will not necessarily available with the cabinet you selected.

Designation	Inspired by
Dynamic 57	Dynamic microphone Shure® SM57
Dynamic 421	Dynamic microphone Sennheiser® MD421
Knightfall	Condenser microphone Blue® Dragonfly
Condenser 87	Condenser microphone Neumann® U87
Ribbon160	Ribbon microphone Beyerdynamic® M160N
Ribbon121	Ribbon microphone Royer® R121
Bass 20	Dynamic microphone Electrovoice® RE20
Bass 52	Dynamic microphone Shure® Beta52

5.4 Block diagram



5.5 Technical Data

Designation	Characteristics
AMP / INST / LINE IN	6.35mm (1/4 in) Jack balanced (TRS, Tip/Ring/Sleeve) IN LEVEL switch affects input sensitivity and impedance: <input type="checkbox"/> +12dB: Max level: 4 dBu, Impedance: 1 MOhms <input type="checkbox"/> 0dB: Max level: 16 dBu, Impedance: 57 kOhms <input type="checkbox"/> -24dB: Max level: 40 dBu, Impedance: 47 KOhms
AUX IN	3.5 mm (miniature) Jack stereo (TRS), downmixed to mono
SPEAKER OUT	6.35mm (1/4 in) Jack unbalanced (TS) Unprocessed, unbuffered, directly connected to AMP IN
LINE OUT	6.35mm (1/4 in) Jack balanced (TRS) Max level: 10 dBu, Impedance : 300 Ohms
DI OUT	XLR balanced Max level: 10 dBu, Impedance: 300 Ohms Protected against +48V phantom power
Headphones Output	3.5 mm (miniature) Jack stereo (TRS)
ADC/DAC	Sampling frequency: 96 kHz Resolution: 24 bits
Frequency response	30 Hz - 19 kHz
Min Latency	2.2 ms (LINE IN to LINE OUT)
THD+N ratio	0.03% (IN LEVEL 0dB, sine wave 1kHz 4dBu)
SNR	91dB
Power supply	Mains power adaptor DC Jack 2.1mm, negative center Input voltage: 12V DC Power: approx. 2 W Current draw: 140mA typical, 200mA max
Dimensions	Width: 100mm including connectors Depth: 121mm Height: 60mm including knobs Weight: 450 g

6. Technical support

Should you encounter a problem with your product or need help regarding any technical aspects, please note that Two notes Audio Engineering has developed on-line services to provide you with fast and efficient technical support, the [Two notes Help Desk](#).

Don't hesitate to browse the [Knowledgebase](#), which contains all sorts of useful informations, or [submit a ticket](#) if you have any question or need assistance with a Two notes product.

6.1 Two notes Website

On the [Two notes Audio Engineering](#) website, you will find:

- news about the company and the products (news on the homepage),
- comprehensive information about the Torpedo C.A.B. M and its many applications (FAQ),
- firmware and software updates to download (products/Torpedo C.A.B. M/downloads),
- access to the Two notes Store where you can buy new cabinets,
- the Torpedo BlendIR software (products/Torpedo C.A.B. M/downloads),
- an official forum where you can share tips and advice with other Torpedo users (forum).

The Two notes Team often visits specialized forums to help out users.

6.2 E-mail

We do not offer technical support via e-mail. Please contact us via the Help Desk at the address above.

From:
<https://wiki.two-notes.com/> - **User's manuals**

Permanent link:
https://wiki.two-notes.com/doku.php?id=torpedo_cab_m:torpedo_c.a.b._m_user_s_manual

Last update: **2019/04/04 11:08**

